

Figure 1: Coughing number when swallowing 20ml samples for patients at different grades as assessed by the Water Drinking Test.

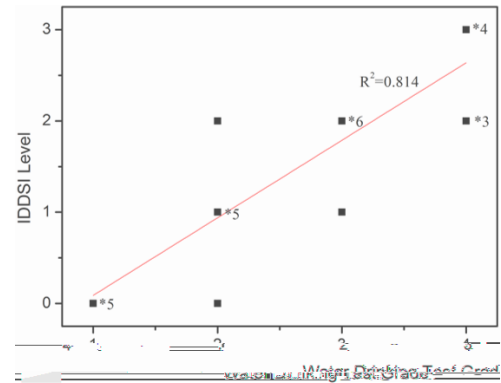
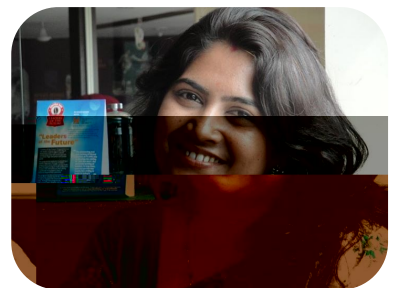
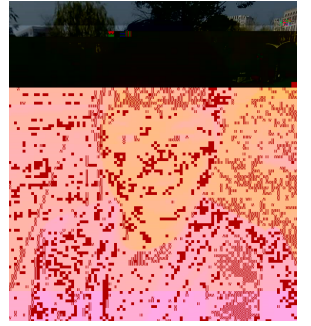


Figure 2: A plot of the IDDSI texture level against the swallowing capacity as assessed by the Water Drinking Test. The number next to asterisked points represents the numbers of subjects at that same point.







CERTIFICATE OF RECOGNITION



For Outstanding Contribution to International Education

Presented to

Yuan Zhenxing, Zhonghua Zheng, Haiyan, Zhonghua, Li Zhongyuan, Xinyu, Zhenyuan, Yan Huiwen, Jia Shiqiang, Caroline Lewis, Joseph Dwyer, Elizabeth Wang, Kefu Wang, Guo Jia, Qianhua, Xuejun, Li, Lydia

for their exceptional commitment and leadership in the development and implementation of the International Education, Innovation, Research, Program, Development, and Leadership Program at Zhejiang University, Hangzhou, China.

